

**MDCI**  
automation

# Cobot QDK

Powered by

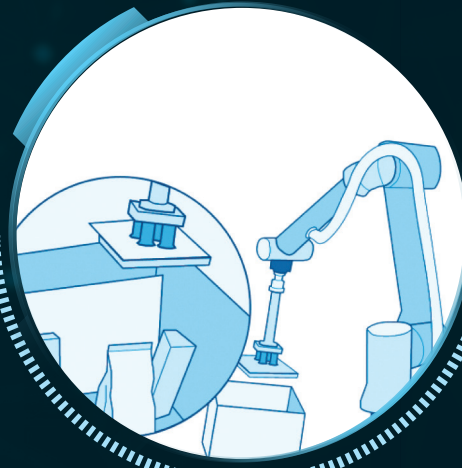


# Sort It Out!



## Parcel Induction

Singulate or sort mixed parcels



## Case Packing

Pack or consolidate orders



## Goods-to-Person

Handle and transfer eaches

[www.mdciautomation.com](http://www.mdciautomation.com)

## Quick Deployment Kit

**A scalable solution for parcel induction, case packing, and goods-to-person tasks.**

Powered by AI-enabled software and leading edge robotics, the Quick Deployment Kit helps you "sort it out."

## Path to 100% Quality



Logistics companies struggle to staff appropriate labor and meet the demanding fulfillment requirements of today's e-commerce consumer.

Powered by



## Fast. Accurate. Scalable

PlusOne's software identifies the pick points for items in a pick zone and sends the points to your robot. Your robot arm picks and places each item onto a place zone/conveyor. PickOne verifies placement and addresses errors by issuing commands to reposition errant items.

## Benefits

- ✓ Fully integrated system, including perception, manipulation, and intelligence
- ✓ Designed to be moved into place with standard material handling equipment
- ✓ Preloaded with PickOne and Yonder
- ✓ Camera and lighting are hand adjustable for a wide range of layouts
- ✓ 3-Mode Gripper than can handle >90 percent of typical items in eCommerce picking environment

## Specification

Max Robot Speed	1m/s (39.4 in/sec)
Payload	9.07 kg (20 lbs)
Max Reach	1300 mm (51.2 in)
IP Classification	IP54
Physical Weight	255.8 kg (563.9 lbs)
Footprint (LxWxH)	1350 mm x 810 mm x 2532 mm (53.1 in x 31.9 in x 99.9 in)
Power Consumption	58.2kw, Based on 21hrs/day of system operation