

Product Overview 7.1



Fibox enclosures by size

H x W x D inches	Enclosure	H x W x D inches	Enclosure	H x W x D inches	Enclosure
2.0 x 2.0 x 1.6	EURONORD	6.7 x 5.5 x 3.7	PICCOLO	10.0 x 10.0 x 6.0	ARCA - JIC
2.6 x 2.0 x 1.8	EURONORD	7.1 x 5.1 x 1.4	MNX	10.1 x 8.6 x 5.3	CARDMASTER
3.2 x 3.1 x 2.2	EURONORD	7.1 x 5.1 x 2.0	MNX	10.9 x 7.4 x 5.1	SOLID
3.2 x 3.1 x 2.6	EURONORD	7.1 x 5.1 x 2.4	MNX	10.9 x 7.4 x 7.1	SOLID
3.2 x 3.1 x 3.3	EURONORD	7.1 x 5.1 x 3.0	MNX	10.9 x 10.9 x 5.1	SOLID
3.2 x 3.1 x 3.7	EURONORD	7.1 x 5.1 x 3.3	MNX	10.9 x 10.9 x 7.1	SOLID
3.9 x 2.6 x 1.6	EURONORD	7.1 x 5.1 x 3.9	MNX	11.0 x 8.6 x 6.1	CARDMASTER
3.9 x 3.9 x 1.4	MNX	7.1 x 5.1 x 4.9	MNX	11.8 x 9.1 x 4.3	EURONORD
3.9 x 3.9 x 2.0	MNX	7.1 x 5.1 x 5.9	MNX	11.8 x 7.9 x 5.9	ARCA - IEC
3.9 x 3.9 x 2.4	MNX	7.1 x 5.1 x 6.9	MNX	11.8 x 7.9 x 7.1	CAB
3.9 x 3.9 x 3.0	MNX	7.1 x 7.1 x 2.4	MNX	11.8 x 9.1 x 3.4	EURONORD
4.3 x 3.1 x 2.6	PICCOLO	7.1 x 7.1 x 3.0	MNX	11.8 x 11.8 x 7.1	CAB
4.3 x 3.1 x 3.3	PICCOLO	7.1 x 7.1 x 3.3	MNX	11.8 x 15.8 x 5.9	ARCA - IEC
4.4 x 4.7 x 2.6	EURONORD	7.1 x 7.1 x 3.9	MNX	12.0 x 10.0 x 5.0	ARCA - JIC
4.4 x 4.7 x 3.0	EURONORD	7.1 x 7.1 x 4.9	MNX	12.0 x 10.0 x 6.0	ARCA - JIC
4.4 x 4.7 x 3.7	EURONORD	7.1 x 7.1 x 5.9	MNX	12.4 x 10.2 x 4.3	CARDMASTER
4.4 x 4.7 x 4.1	EURONORD	7.1 x 7.1 x 6.9	MNX	12.6 x 10.2 x 5.1	CARDMASTER
4.7 x 3.1 x 2.4	EURONORD	7.4 x 7.4 x 5.1	SOLID	13.4 x 5.9 x 4.0	EURONORD
4.7 x 3.1 x 3.3	EURONORD	7.4 x 7.4 x 7.1	SOLID	13.4 x 5.9 x 4.8	EURONORD
4.7 x 3.1 x 3.5	EURONORD	7.9 x 4.7 x 3.0	EURONORD	14.0 x 12.0 x 6.0	ARCA - JIC
5.1 x 3.1 x 1.4	MNX	7.9 x 4.7 x 3.5	EURONORD	14.0 x 12.0 x 7.0	ARCA - JIC
5.1 x 3.1 x 2.0	MNX	7.9 x 5.9 x 3.1	EURONORD	14.2 x 6.3 x 4	EURONORD
5.1 x 3.1 x 2.4	MNX	7.9 x 11.8 x 5.9	ARCA - IEC	14.2 x 7.9 x 5.9	EURONORD
5.5 x 3.1 x 2.6	PICCOLO	8.0 x 6.0 x 4.0	ARCA - JIC	14.9 x 7.4 x 5.1	SOLID
5.1 x 3.1 x 3.0	MNX	8.0 x 6.0 x 5.0	ARCA - JIC	14.9 x 7.4 x 7.1	SOLID
5.5 x 3.1 x 3.3	PICCOLO	8.0 x 8.0 x 4.0	ARCA - JIC	14.9 x 10.9 x 5.1	SOLID
5.1 x 3.1 x 3.9	MNX	8.4 x 7.3 x 4.0	CARDMASTER	14.9 x 10.9 x 7.1	SOLID
5.1 x 3.1 x 4.9	MNX	9.1 x 3.1 x 2.6	PICCOLO	15.4 x 12.4 x 6.6	CARDMASTER
5.1 x 5.1 x 1.4	MNX	9.1 x 3.1 x 3.3	PICCOLO	15.7 x 11.8 x 5.9	ARCA - IEC
5.1 x 5.1 x 2.0	MNX	9.1 x 5.5 x 3.7	PICCOLO	15.7 x 11.8 x 7.1	CAB
5.1 x 5.1 x 2.4	MNX	9.1 x 5.5 x 4.9	PICCOLO	15.8 x 11.8 x 8.3	ARCA - IEC
5.1 x 5.1 x 3.0	MNX	9.6 x 4.9 x 4.0	EURONORD	15.7 x 19.7 x 8.3	ARCA - IEC
5.1 x 5.1 x 3.9	MNX	9.3 x 7.3 x 4.7	CARDMASTER	15.7 x 23.6 x 8.3	ARCA - IEC
5.1 x 5.1 x 4.9	MNX	9.6 x 6.5 x 3.5	EURONORD	16.0 x 14.0 x 8.0	ARCA - JIC
6.0 x 6.0 x 4.0	ARCA - JIC	9.6 x 6.5 x 4.7	EURONORD	18.0 x 16.0 x 10.0	ARCA - JIC
6.0 x 6.0 x 5.0	ARCA - JIC	9.8 x 6.3 x 3.5	EURONORD	19.7 x 15.7 x 7.9	CAB
6.3 x 3.1 x 2.2	EURONORD	9.8 x 6.3 x 4.9	EURONORD	19.7 x 15.8 x 8.3	ARCA - IEC
6.3 x 3.1 x 2.6	EURONORD	9.8 x 6.3 x 5.9	EURONORD	19.7 x 27.6 x 11.8	ARCA - IEC
6.3 x 3.1 x 3.3	EURONORD	10 x 7.1 x 2.5	MNX	20.0 x 16.0 x 8.0	ARCA - JIC
6.3 x 3.1 x 3.7	EURONORD	10 x 7.1 x 3.0	MNX	22.0 x 10.9 x 5.1	SOLID
6.3 x 4.7 x 3.5	EURONORD	10 x 7.1 x 3.5	MNX	22.0 x 14.9 x 7.1	SOLID
6.3 x 4.7 x 5.5	EURONORD	10 x 7.1 x 4.9	MNX	23.6 x 15.7 x 8.7	CAB
6.5 x 6.3 x 3.5	CARDMASTER	10 x 7.1 x 5.9	MNX	23.6 x 15.8 x 8.3	ARCA - IEC
6.5 x 6.3 x 4.2	CARDMASTER	10 x 7.1 x 6.9	MNX	23.6 x 31.5 x 11.8	ARCA - IEC
6.5 x 6.3 x 4.6	CARDMASTER	10.0 x 8.0 x 3.0	ARCA - JIC	24.0 x 20.0 x 8.0	ARCA - JIC
6.5 x 6.3 x 5.3	CARDMASTER	10.0 x 8.0 x 4.0	ARCA - JIC	24.0 x 24.0 x 10.0	ARCA - JIC
6.7 x 3.1 x 2.6	PICCOLO	10.0 x 8.0 x 5.0	ARCA - JIC	27.6 x 19.7 x 11.8	ARCA - IEC
6.7 x 3.1 x 3.3	PICCOLO	10.0 x 8.0 x 6.0	ARCA - JIC	31.5 x 23.6 x 11.8	ARCA - IEC

ARCA – JIC



ARCA - JIC non-metallic enclosures provide users of traditional electrical junction boxes an easy upgrade path for a robust, high-performance solution. The **ARCA - JIC** enclosures are available in standard JIC sizes and feature industry standard dimensions and panels, with both screw and hinge covers. The **ARCA – JIC** series size range is 6.0" x 6.0" x 4.0" to 24.0" x 24.0" x 10.0" with our traditional opaque raised covers. Many sizes are available with raised transparent covers, and now select sizes offer increased real estate with a [sleek flat opaque cover design \(FC\)](#).

Fibox is proud to offer the industry's first, and only JIC sized, NEMA 4X polycarbonate enclosure with industry standard [3/4 and 1/2 inch pre-formed knock-outs \(KO\)](#). These knock-outs provide easy modifications in the field or factory floor while still allowing the enclosure to retain its NEMA 4X status.

Polycarbonate:

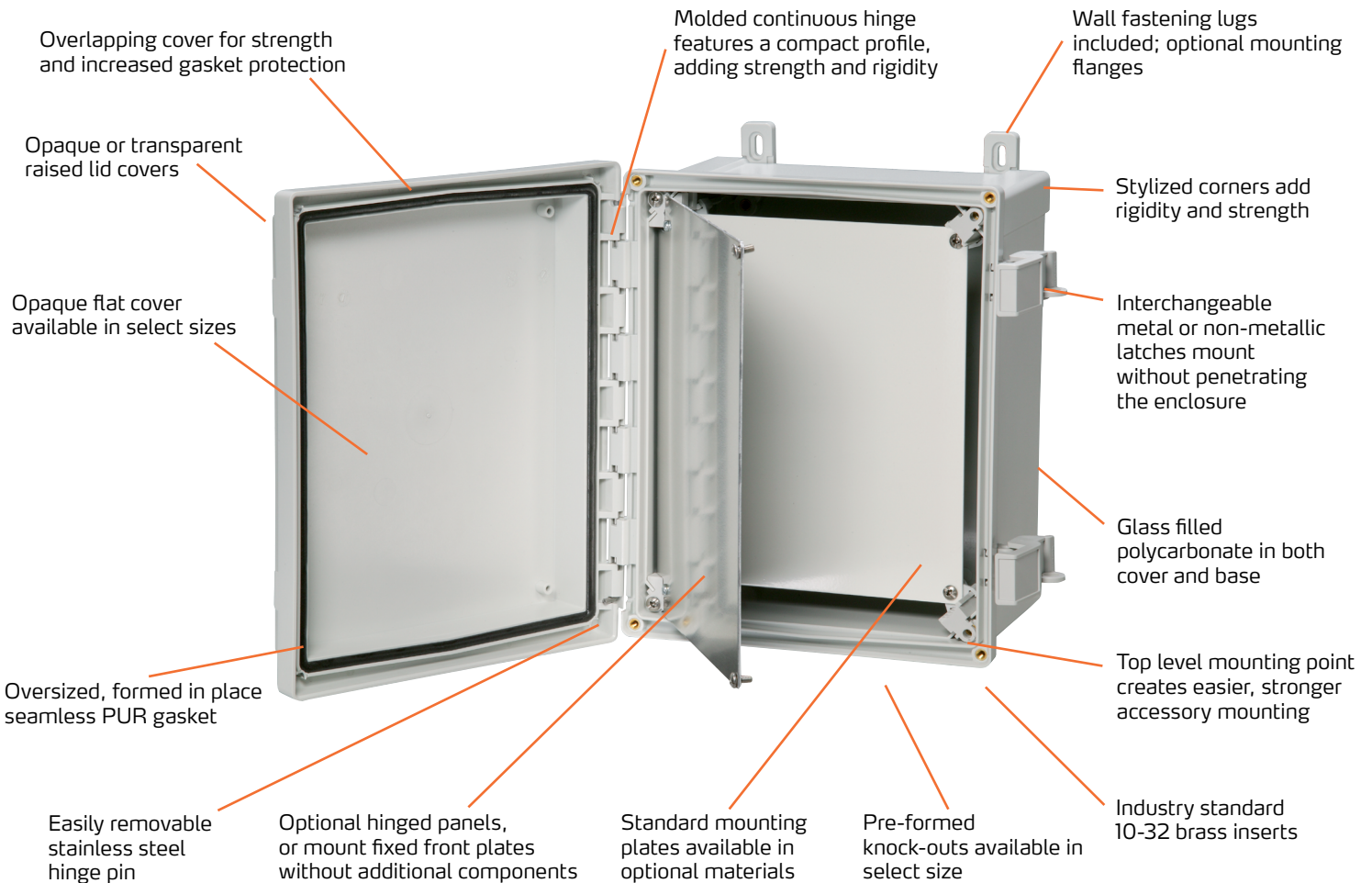
UL Type 4, 4X, 6, 6P, 12

IP 66/67

IK 09



POLYCARBONATE		Dimensions Inch.	
6 x 6 x 4	10 x 8 x 3 (FC)	12 x 10 x 5 (FC) (KO)	16 x 14 x 8
8 x 6 x 4 (FC) (KO)	10 x 8 x 4	12 x 10 x 6 (KO)	18 x 16 x 10
8 x 6 x 5 (KO)	10 x 8 x 5 (FC) (KO)	14 x 12 x 6 (FC) (KO)	20 x 16 x 8
8 x 8 x 4	10 x 8 x 6 (KO)	14 x 12 x 7 (KO)	24 x 20 x 8
	10 x 10 x 6		24 x 24 x 10





ARCA - IEC

ARCA - IEC is the largest polycarbonate enclosure on the market today! Driven by innovation and market demand the **ARCA - IEC** is the ideal and cost effective alternative to sheet steel cabinets needed in demanding locations. **ARCA - IEC** has the features the strength of a metallic box with added benefits of lightweight, rust-free high-grade thermoplastic. Select sizes are available with a pad-lockable swing handle option (S).



Polycarbonate:

UL Type 1, 4, & 4X
IP 66/67
IK 10

POLYCARBONATE				Dimensions Inch.
7.87 x 11.81 x 5.9	15.75 x 11.81 x 5.9	15.74 x 23.62 x 8.26	23.62 x 15.75 x 8.27 (S)	31.49 x 23.62 x 11.81 (S)
11.81 x 15.78 x 5.9	15.75 x 11.81 x 8.26	19.68 x 15.75 x 8.27	23.62 x 31.49 x 11.81	
11.81 x 15.78 x 8.26	15.74 x 19.68 x 8.26	19.68 x 27.55 x 11.81	27.55 x 19.68 x 11.81 (S)	



PICCOLO

PICCOLO enclosures are designed to house push buttons, terminal blocks, motor starters and electronic devices. They are ideal for mounting and protecting process control sensors and switches. Contact your Fibox representative for **PICCOLO** push button options.

Polycarbonate		Dimensions Inch.
4.3 x 3.1 x 2.6	6.7 x 3.1 x 2.6	9.1 x 3.1 x 2.6
4.3 x 3.1 x 3.3	6.7 x 3.1 x 3.3	9.1 x 3.1 x 3.3
5.5 x 3.1 x 2.6	6.7 x 5.5 x 3.7	9.1 x 5.5 x 3.7
5.5 x 3.1 x 3.3		9.1 x 5.5 x 4.9

Polycarbonate:

UL Type 1, 4, 4X, 6, 12, and 13
IP 66/67
IK 08
UV-Protected



TEMPO

TEMPO enclosures are designed to save time and money. **TEMPO** is easy to assemble and install. The large cover offers ample real estate for printing, labels or switches. Rapid hinges can be added in seconds without any tools or screws. Select sizes feature transparent covers (T) and formed-in-place metric knock-outs (KO).

Polycarbonate:

UL 1,4,4X & 12
IP 65
IK 07

POLYCARBONATE			Dimensions Inch.
3.7 x 2.6 x 2.4 (KO)	7.4 x 4.8 x 3.5 (KO) (T)	9.4 x 7.5 x 4.2 (T)	13.5 x 11.4 x 4.6 (T)
4.3 x 4.3 x 2.6 (KO)	7.4 x 4.8 x 5.3 (KO)	9.4 x 7.5 x 6	13.1 x 11.4 x 6.3
5.1 x 3.7 x 2.6 (KO)	7.9 x 6.4 x 3.9 (KO) (T)	11.4 x 9.4 x 4.2 (T)	
5.1 x 5.1 x 3 (KO)	7.9 x 6.4 x 5.6 (KO)	11.4 x 9.4 x 6	



All Fibox enclosures are built for harsh and demanding environments.

Tough, impact resistant polycarbonate withstands freezing cold, blazing heat without denting, rusting or delaminating. Fibox's enclosing innovations offer years of worry free service.

MNX



Polycarbonate:

UL Type 1, 4, 4X, 6, 12, and 13
 IP 66/IP 67
 IK 08
 UV-Protected



MNX enclosures are designed to house and protect electrical and electronic components in hostile environments. The **MNX** range now exceeds over 260 variations including formed- in-place metric knock-outs (KO) allowing easy modification in the field or factory floor.

POLYCARBONATE			Dimensions Inch.
3.9 x 3.9 x 1.4	5.1 x 5.1 x 1.4	7.1 x 5.1 x 3.3 (KO)	10 x 7.1 x 2.5 (KO)
3.9 x 3.9 x 2.0	5.1 x 5.1 x 2.0 (KO)	7.1 x 5.1 x 3.9 (KO)	10 x 7.1 x 3.0 (KO)
3.9 x 3.9 x 2.4 (KO)	5.1 x 5.1 x 2.4 (KO)	7.1 x 5.1 x 4.9 (KO)	10 x 7.1 x 3.5 (KO)
3.9 x 3.9 x 3.0 (KO)	5.1 x 5.1 x 3.0 (KO)	7.1 x 5.1 x 5.9 (KO)	10 x 7.1 x 3.9 (KO)
	5.1 x 5.1 x 3.9 (KO)	7.1 x 5.1 x 6.9 (KO)	10 x 7.1 x 4.9 (KO)
5.1 x 3.1 x 1.4	5.1 x 5.1 x 4.9 (KO)		10 x 7.1 x 5.9 (KO)
5.1 x 3.1 x 2.0		7.1 x 7.1 x 2.4 (KO)	10 x 7.1 x 6.9 (KO)
5.1 x 3.1 x 2.4 (KO)	7.1 x 5.1 x 1.4	7.1 x 7.1 x 3.0 (KO)	
5.1 x 3.1 x 3.0 (KO)	7.1 x 5.1 x 2.0	7.1 x 7.1 x 3.9 (KO)	14.2 x 10.0 x 6.0 (KO)
5.1 x 3.1 x 3.9 (KO)	7.1 x 5.1 x 2.4 (KO)	7.1 x 7.1 x 4.9 (KO)	
5.1 x 3.1 x 4.9 (KO)	7.1 x 5.1 x 3.0 (KO)	7.1 x 7.1 x 5.9 (KO)	

CAB



CAB wall mounting enclosures feature hinged doors with both opaque or transparent cover options and quick release padlocking latches. **CAB** series are ideal for mounting and housing operator controls and process controllers.

POLYCARBONATE		Dimensions Inch.
5.9 x 5.9 x 4.3	11.8 x 11.8 x 7.1	19.7 x 15.7 x 7.9
11.8 x 7.9 x 7.1	15.7 x 11.8 x 7.1	23.6 x 15.7 x 8.7

Polycarbonate:

UL Type 1, 4, 4X, 12, and 13
 IP 65
 IK 08



SOLID



SOLID enclosures are an excellent choice to house electronic and electrical components. The **SOLID** series is available with screw and hinge covers. The **SOLID** series features an extension frame, allowing for increased enclosure depth, while still maintaining all UL, IP and IK classifications.

POLYCARBONATE		Dimensions Inch.
7.4 x 7.4 x 5.1	14.9 x 7.4 x 5.1	14.9 x 10.9 x 5.1
7.4 x 7.4 x 7.1	14.9 x 7.4 x 7.1	14.9 x 10.9 x 7.1
10.9 x 7.4 x 5.1	10.9 x 10.9 x 5.1	22.0 x 10.9 x 5.1
10.9 x 7.4 x 7.1	10.9 x 10.9 x 7.1	22.0 x 14.9 x 7.1

Polycarbonate:

UL Type 1, 4, 4X, 6, 6P and 12
 IP 66/IP 67
 IK 09



CARDMASTER



CARDMASTER enclosures are ideal for packaging instrumentation, monitoring and process control equipment. The **CARDMASTER** range features two specialized compartments. The first for circuit boards, operator controls, readouts. The second for terminal and interface wiring.

POLYCARBONATE			Dimensions Inch.
6.5 x 6.3 x 3.5	7.4 x 6.3 x 4.2	9.3 x 7.3 x 4.7	12.4 x 10.2 x 4.3
6.5 x 6.3 x 4.2	7.4 x 6.3 x 5.3	10.1 x 8.6 x 5.3	12.6 x 10.2 x 5.1
6.5 x 6.3 x 4.6		11.0 x 8.6 x 6.1	
	8.4 x 7.3 x 4.0		15.4 x 12.4 x 6.6

Polycarbonate:

UL Type 1, 4X* and 12K

IP 65

IK 07/IK 08

*Smallest sizes

EURONORD



EURONORD enclosures are designed to house DIN-rail mounted terminal blocks and various types of sensors. **EURONORD** enclosures are available in aluminum, polycarbonate, and fiberglass. Fibox offers the largest variety of sizes and styles with more than 160 different off-the-shelf versions available for specific requirements.

POLYCARBONATE		Dimensions Inch.
2.0 x 2.0 x 1.6	6.3 x 4.7 x 3.5	13.4 x 5.9 x 4
2.6 x 2.0 x 1.8	6.3 x 4.7 x 5.5	13.4 x 5.9 x 4.8
3.9 x 2.6 x 1.6		
3.2 x 3.1 x 2.2	4.8 x 4.7 x 2.6	9.6 x 6.5 x 3.5
3.2 x 3.1 x 2.6	4.8 x 4.7 x 3	9.6 x 6.5 x 4.7
3.2 x 3.1 x 3.3	4.8 x 4.7 x 3.7	9.8 x 6.3 x 3.5
3.2 x 3.1 x 3.7	4.8 x 4.7 x 4.1	9.8 x 6.3 x 4.9
		9.8 x 6.3 x 5.9
4.7 x 3.1 x 2.2	6.3 x 4.7 x 3.5	
4.7 x 3.1 x 2.4	6.3 x 4.7 x 5.5	
4.7 x 3.1 x 3.3		
4.7 x 3.1 x 3.5	7.9 x 4.7 x 3	14.2 x 6.3 x 4.0
	7.9 x 4.4 x 3.5	14.2 x 7.9 x 5.9
6.3 x 3.1 x 2.2		
6.3 x 3.1 x 2.2	9.6 x 4.9 x 4	11.8 x 9.1 x 3.4
4.8 x 4.7 x 2.6	7.9 x 5.9 x 3.1	11.8 x 9.1 x 4.3

Polycarbonate:

UL Type 1, 4, 4X, 12 and 13

IP 66/IP 67

IK 08

Aluminum:

UL Type 1, 4, 4X, 12 and 13

IP 66/IP 67/IP 68

IK 08

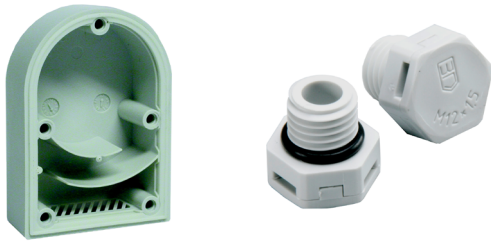
Fiberglass:

UL Type 1, 4, 4X, 12 and 13

IP 66/

IK 08

ALUMINUM			Dimensions Inch.	FIBERGLASS		Dimensions Inch.
2.0 x 1.8 x 1.3	9.9 x 3.2 x 2.2	22.2 x 6.3 x 3.5	23.6 x 9.1 x 4.3	3.1 x 3.0 x 2.2		10.2 x 6.3 x 3.6
2.6 x 2.4 x 1.8	4.9 x 4.9 x 3.2	9.1 x 7.9 x 4.3	15.9 x 12.2 x 4.3	4.3 x 3.0 x 2.2		14.2 x 6.3 x 3.6
3.9 x 2.6 x 1.8	8.7 x 4.9 x 3.2	9.1 x 7.9 x 7.1	15.9 x 12.2 x 7.1	6.3 x 3.0 x 2.2		10.1 x 9.9 x 4.8
6.0 x 2.6 x 1.8	14.3 x 4.9 x 3.2	11.0 x 9.1 x 4.3	23.6 x 12.2 x 4.3	7.5 x 3.0 x 2.2		15.8 x 9.8 x 4.7
3.2 x 3.0 x 2.2	6.4 x 6.4 x 3.6	13.0 x 9.1 x 4.3	23.6 x 12.2 x 7.1	4.8 x 4.7 x 3.5		16.0 x 15.8 x 4.7
5.0 x 3.2 x 2.2	10.4 x 6.4 x 3.6	13.0 x 9.1 x 7.1		8.7 x 4.7 x 3.5		
7.0 x 3.2 x 2.2	14.2 x 6.3 x 3.5	15.8 x 9.1 x 4.3		6.3 x 6.3 x 3.6		



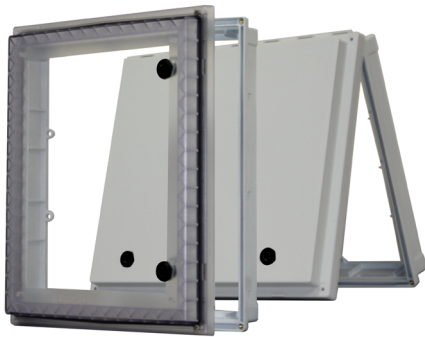
VENTILATION DEVICES

Fibox's enclosure **VENTILATION DEVICES** feature a molded in place gasket that ensures a tight seal every time, yielding a rain-tight environment to keep valuable components dry and you worry free. Fibox's **VENTILATION DEVICES** work seamlessly with **all enclosures**.



CABLE MANAGEMENT

Fibox offers an excellent selection of cable glands, membrane glands, flanges and **cable entry solutions**. Fibox's cable entry solutions maintain your enclosures' high ingress ratings to protect your investment from external forces.



INSTRUMENT PROTECTION WINDOWS

The **IPW (Instrument Protection Window)** is fully UL listed and rated NEMA 4X maintaining a dry dust free environment once the cover is locked. The **IPW** can be mounted on any manufacture's enclosure to provide safe and secure controlled access to underlying components and instruments. **IPWs** are available in two sizes with opaque or transparent covers and a variety of locking options.



Polycarbonate:	POLYCARBONATE	
	INNER DIMENSIONS	OUTER DIMENSIONS
UL Type 4X	14.49 x 12.6 x 3.31	17.81 x 15.76 x 3.45
IP 66/IP 67	14.49 x 12.6 x 3.31	17.81 x 15.76 x 3.45
IK 09	11.02 x 8.39 x 3.31	13.46 x 11.62 x 3.45

CUSTOMIZATION

All Fibox enclosures can easily be customized to meet your exact requirements. Sophisticated CNC machinery provides holes, cutouts, recesses, and more. With custom colors and printing available plus all the standard hardware accessories you might need, Fibox can easily customize your enclosure. Contact Fibox's engineering department at customization@fiboxusa.com or call 410-760-9696 and let our in-house applications team work with you to find the best solution to your unique application needs.

FIBOX IN THE FIELD



Fibox in the Field, enclosures App allows users to quickly search and connect for the best selection of enclosing innovation products and accessories on their handheld devices. Available for **Android™** and **Apple®, iPhone™**, and **iPad™** download **Fibox in the Field** with QRC below.



Toll-free USA 1 888 342 6987
www.fiboxusa.com
 E-mail: sales@fiboxusa.com

